

FOTO

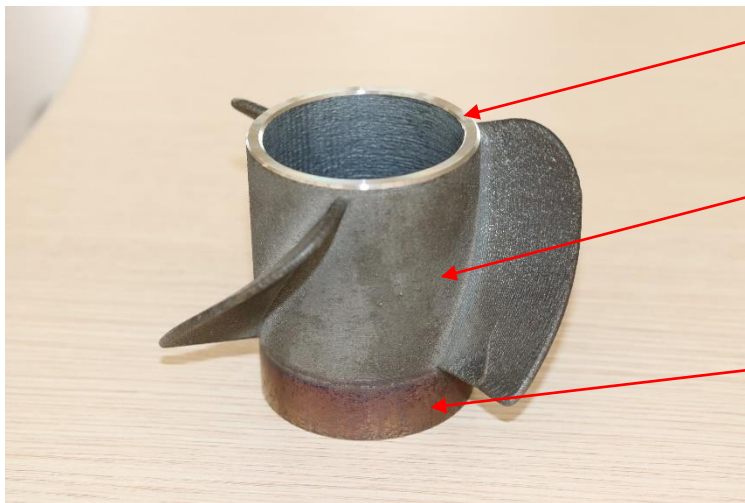


TESTO DESCRITTIVO

Direct Energy Deposition Sample of adding features (Application of Laserdyne DED Machines)

Ingombro: 11x10x11 cm (LxPxH)

Peso: 3 kg



Milled after deposition with CNC machine

Features deposited: cylinder + blades (5 axes deposition)

Original base

SECTOR	Naval
PURPOSE OF PART	ADDING OF NAVAL BLADE OF PROPELLER ON EXISTING BASE

<p style="text-align: center;">TECHNICAL DETAILS</p>	<p>Build time*: 2,5 hours; Dimension of the reported material: 95 mm diameter x 60 mm Height Base material: AISI316L; Layer thickness: 0.5 mm; Material: AISI316L; *Build Speed is depending on the application. It is influenced by many factors and it is not related only to the part volume.</p>	
<p>AZIENDA/ORGANIZZAZIONE</p>		<p>PERSONA DI CONTATTO</p>
<p>Ragione sociale: Prima Additive (Prima Industrie Group) Indirizzo: Via Torino-Pianezza, 36 10093 Collegno (To) – Italy Sito: www.primaadditive.com</p>		<p>Nome: Andrea Medina Telefono: +39 340 156 05 38 E-mail: andrea.medina@primaadditive.com</p>