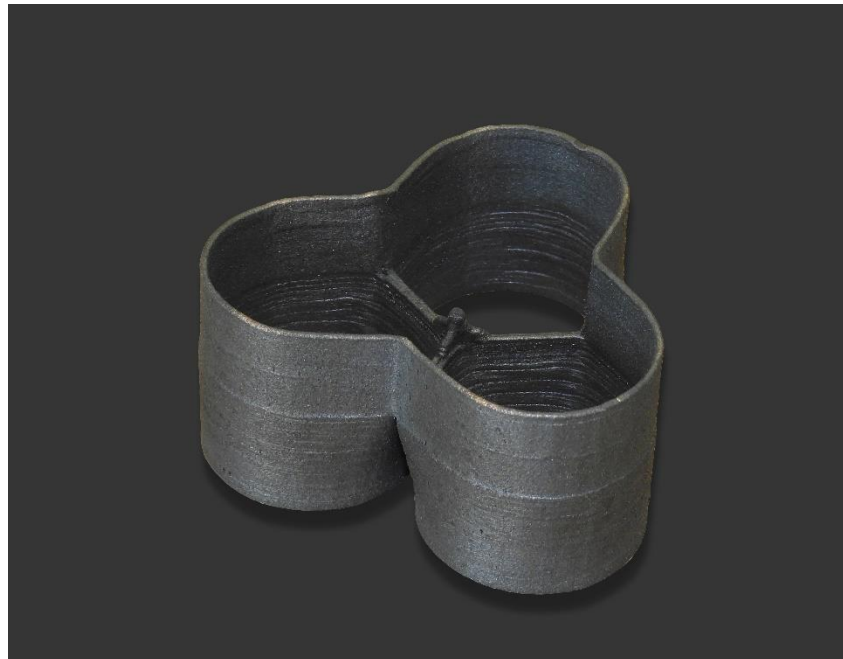


FOTO



TESTO DESCRITTIVO

Connection

In manifolds connection guarantees the mechanical strength of the structure and the gas tightness of the exhaust system.

This component was made by a robotic directed deposition setup; CAM implementation and deposition strategies has been performed in order to produce a uinique sealed part.

Designed by Andrea Valensin

- Dimensioni: 70x65x35 mm - Peso: 85 g
- Materiale: AISI 316 L
- Processo di Produzione: Laser Metal Deposition

AZIENDA/ORGANIZZAZIONE

Ragione sociale: **Politecnico di Milano – Dipartimento di Meccanica - AddMeLab**
 Indirizzo: **Via Privata Giuseppe La Masa, 1, 20156 Milano MI**
 Sito: <http://www.addmelab.polimi.it/>

PERSONA DI CONTATTO

Nome: **Valentina Furlan**
 E-mail: valentina.furlan@polimi.it